



Quick Start Guide for Sprint Mobile Broadband Devices

- Novatel Wireless™ (Merlin S720)
- Novatel Wireless™ (Ovation U720)
- Novatel Wireless™ (Merlin EX720)



This document describes how to use the Mac OS® X Network support of the Sprint Mobile Broadband Connectivity Devices with PowerBook® G4 computers, MacBook computers and iMac Desktop computers.

To use your Sprint Mobile Broadband Device:

You will need one of the following computers running Mac OS X version 10.4.8 or higher:

- A PowerBook G4 computer with PC Card (PCMCIA) slot or USB port, depending on the Mobile Broadband Device you purchased
- A MacBook computer with USB port or a MacBook Pro computer with a PC Express slot or USB port, depending on the Mobile Broadband Device you purchased
- An iMac computer with USB port

To check your OS version, from the Apple menu () choose **About This Mac**. If your version is earlier, visit: www.apple.com/support/downloads for upgrading instructions, or, in Finder™, choose **GO > Applications > System Preferences**

Note: Before using the device in your Apple computer, you must do the following on a Windows-based PC (described in this document):

- If you've received the device from Sprint activated and locked: unlock the device
- If your device has not been activated: activate it

Setting up the Windows PC:

You will need a Windows-based PC with a PCMCIA Card slot (for the Merlin S720), PC Express Card slot (for the Merlin EX720), or USB port (for the Ovation U720), running Windows 2000 (with Service Pack 1 or later) or Windows XP. You may also perform this function running Windows on your Intel-based Mac using Boot Camp

- Write down your device's ESN (the 11-digit number on the back of your device)
- Install the Sprint Mobile Broadband Connection Manager on the Windows PC or in Windows mode of Boot Camp on your Intel-based Mac
 - Insert the Sprint Mobile Broadband Connection Manager CD into the computer
 - Launch the installer file
 - Follow the instructions displayed on the screen. When prompted, insert the device into your computer

Warning! When inserting or removing your device, always grip it by its sides. Gripping the device by its antenna may damage the device.

If your device is already activated and locked:

After Windows installs the drivers for the device, Sprint Connection Manager should start automatically, and display "Card Locked." To unlock the card:

- If Sprint Connection Manager is not expanded, click to expand it
- Click the icon
- In the Enter User Lock Code window, enter the lock code and click **OK**. The icon should now be . You can now use the device on your Mac computer

If your device is not activated:

You will additionally need a telephone. After Windows installs the drivers for the device, the Activation Wizard should start automatically

- Ensure you have the items listed on the screen and call the phone number listed
- Follow the instructions of the Sprint Customer Service specialist to activate your device. Write down the following information provided to you:

My Sprint Device Phone Number:

My MSID: _____

My Account Password: _____

My Sprint Username: _____

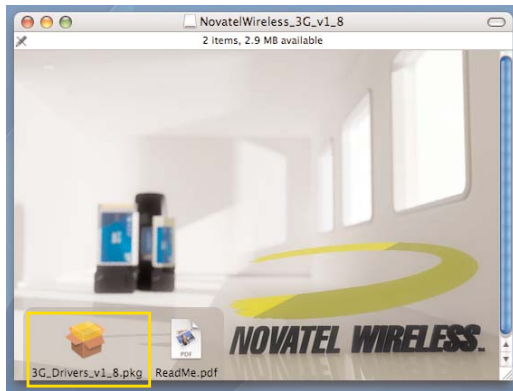
After Sprint sets up your account on the network, your device is activated and ready to use on your Mac computer. See "Installing your Sprint Mobile Broadband Device on your Mac Computer" on the following page.

The installer package is available at www.sprint.com/downloads. Select **Mac OS** as the operating system, click on the link "Instructions for EVDO Rev A Novatel 720 Devices," then select the file "NovatelWireless_3G_v1_8.dmg.zip." When you download this file to your Apple computer it will unzip and sit on your desktop as an installer. Double click the installer to begin installation.

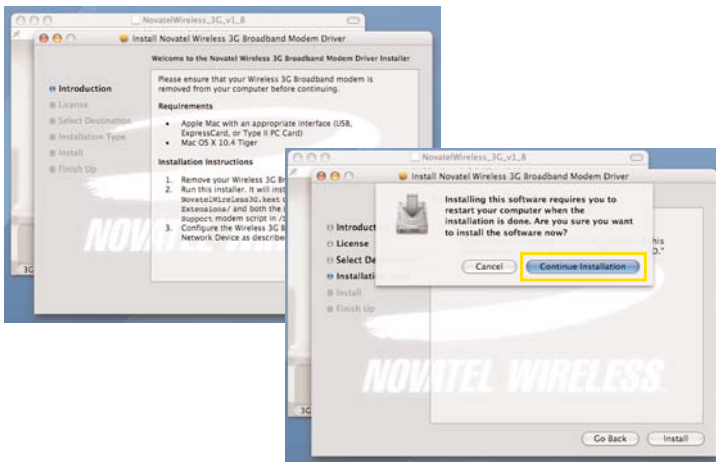
Installing your Sprint Mobile Broadband Device on your Mac Computer:

After you have completed the activation process:

- Open the NovatelWireless_3G_v1_8 file
- Click on the package icon "3G_Drivers_v1_8.pkg"

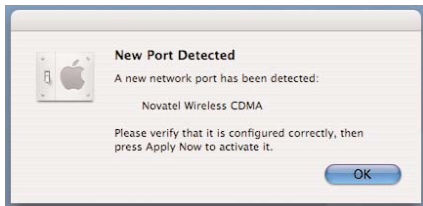


- Follow the installation instructions. You will be required to restart your computer upon completion. Continue the installation by clicking the **Continue Installation** button

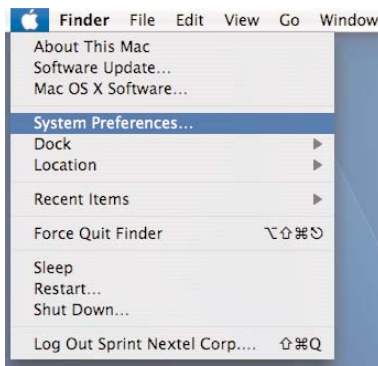


After you restart your computer:

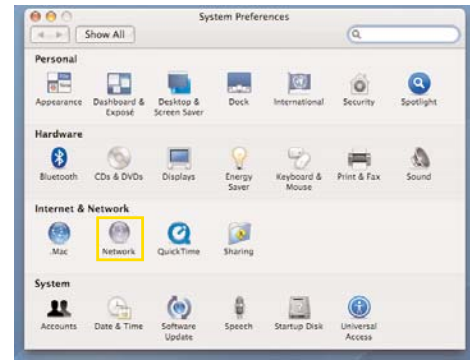
- Holding the device by its sides, insert the device into your Mac computer
- Wait for the New Port Detected window to appear. Click **OK**



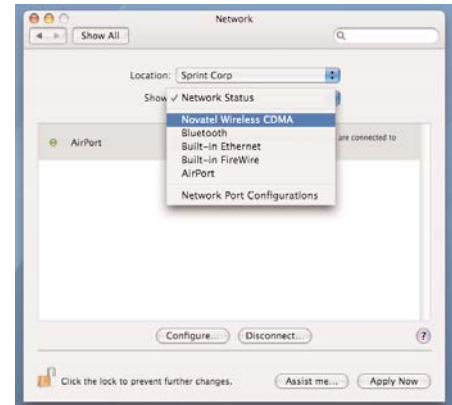
- Launch **System Preferences** from the Apple menu



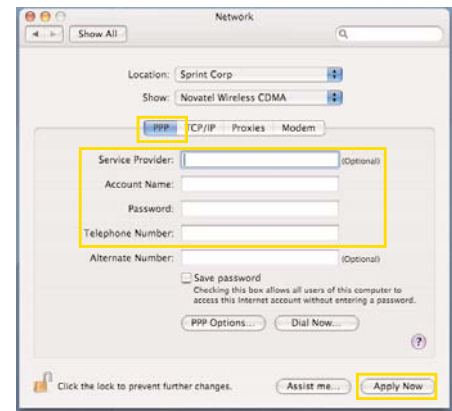
- Select the **Network** icon in the System preferences window



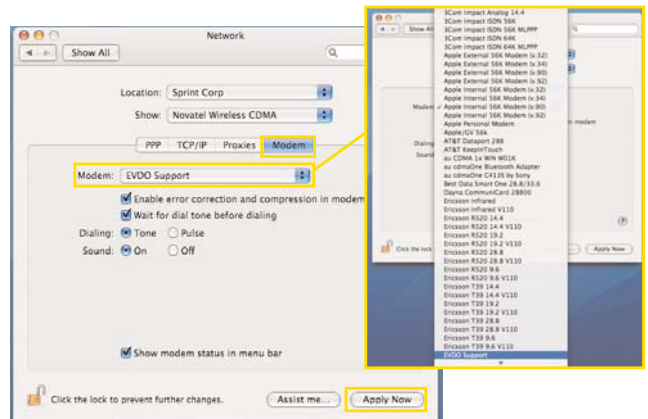
- Select your device in the **Show** pull down menu



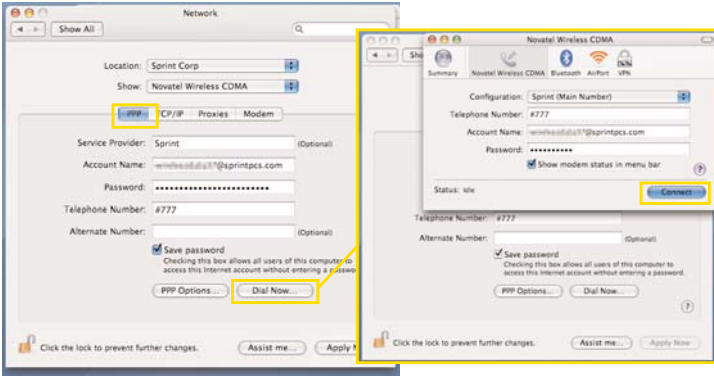
- Click the **PPP** tab and enter the Account Name and Password provided by the Sprint Customer Service specialist. Enter "#777" in the Telephone Number field
- Click the **Apply Now** button



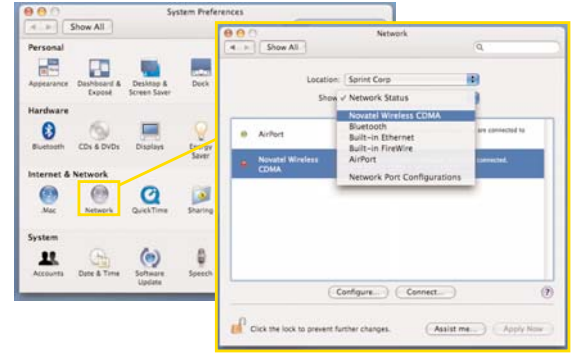
- Click the **Modem** tab and change the Modem selection in the pull down menu to "EVDO Support"
- Click the **Apply Now** button



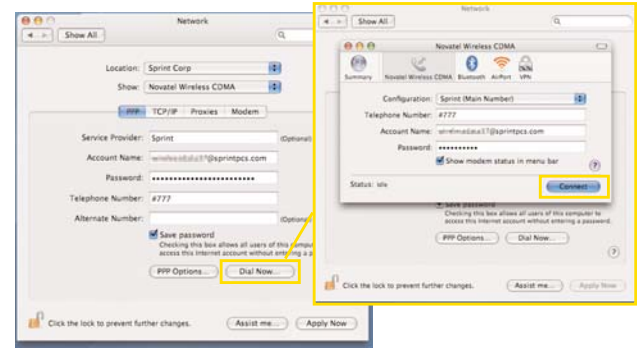
- Click the **PPP** tab
- Click the **Dial Now** button
- Click the **Connect** button in the pop-up window



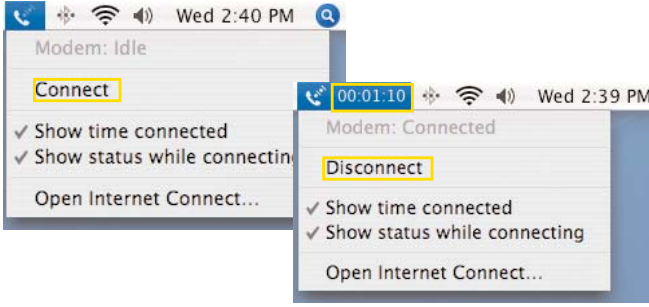
- Select the **Network** icon and then select the "Novatel Wireless CDMA" option from the **Show** pull down menu



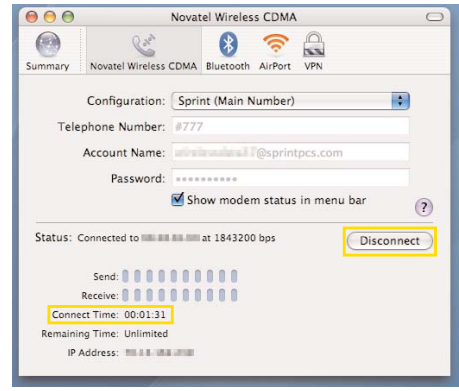
- In the PPP tab, click **Dial Now** and then **Connect** to connect your Sprint Mobile Broadband Device to the Sprint Network



- You are now connected to the Sprint Network. To use your Mobile Broadband Device going forward, follow the instructions provided based on your computer model:
 - If your computer is an Intel-based iMac or MacBook: From the Phone menu you can connect/disconnect your internet connection. While connected, you can also see the duration of your connection



- You are now connected to the Sprint Network. From this window you can connect/disconnect your internet connection. While connected, you can also see the duration of your connection



- If your computer is a PowerPC-based PowerBook or iMac G-series:
 - Click **System Preferences** from the Apple menu ()



To uninstall the Mobile Broadband Device driver:

If you would like to remove this driver and its associated files from your machine in the future, delete the following files (requires Administrator permissions):

```
/System/Library/Extensions/NovateWireless2G.kext
/Library/Receipts/3G_Drivers_v1_8.pkg
/Library/Modem Scripts/EVDO Support
```