



**Setting Up Email on Your
Sprint International Smart Device
IP-830w by Samsung®**

www.sprint.com

© 2006 Sprint Nextel. All rights reserved. SPRINT, the "Going Forward" logo, the NEXTEL name and logo, and other trademarks are trademarks of Sprint Nextel.

Printed in Korea.

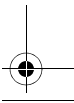
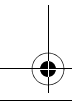
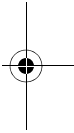
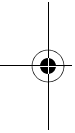
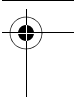
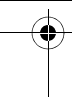
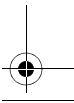
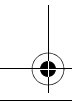
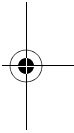
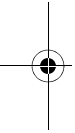
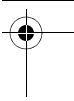
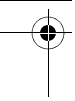


Table of Contents

| | |
|--|----|
| Getting Started | 3 |
| Which Email Application Should I Use? | 4 |
| Setting Up an IMAP or a POP Email Account | 5 |
| What You Will Need to Set Up Your IMAP or POP3 Account . | 5 |
| Setting Up Exchange ActiveSync® | 11 |
| Getting Started | 11 |
| Setting Up Your Device | 12 |
| Setting Up GoodLink™ Wireless Messaging | 15 |
| Setting Up a Hotmail Account | 19 |
| Using the Web Browser to Access Email | 21 |



Getting Started

With your IP-830w smart device, you have several options for sending and receiving email. This manual outlines some of the more popular email configurations that you can set up on your device. (Additional fees may apply for email services.) Please refer to the chart below to see which email method may be best for you:

Getting Started

| Outlook | Microsoft Exchange ActiveSync® | GoodLink™ Wireless Messaging | Pocket MSN | Web Browser |
|--|--|--|---|--|
| Allows you to send or receive email messages with Microsoft Outlook using a corporate account or an account with an Internet Service Provider (ISP). | Allows you to configure a wireless connection to synchronize your email and other information stored on a Microsoft Exchange Server. | Provides real-time access to your Microsoft Outlook email, calendar, contacts, Tasks, and notes. | Allows you to send or receive messages using your online MSN Hotmail account. | Allows you to send or receive messages using Web-based email services. |

Which Email Application Should I Use?

The chart below compares the capabilities of different email applications. Use this chart to determine the best email application for your needs.

| If you would like to: | Outlook | Microsoft Exchange ActiveSync | GoodLink | Pocket MSN | Web Browser |
|---|---------|-------------------------------|----------|------------|-------------|
| Send or receive messages from a POP or IMAP account | ✓ | | ✓ | | |
| Access email from multiple accounts | ✓ | | ✓ | | |
| Check fee-based email accounts like Yahoo! Mail Plus or AOL | ✓ | | ✓ | | |
| Synchronize email and organize information with a corporate Exchange server | | ✓ | ✓ | | |
| Use the Advanced Encryption Standard (AES) while sending and receiving email messages | | | ✓ | | |
| Check a Hotmail account | | | | ✓ | ✓ |
| Check Web-based email services such as Yahoo! Mail and Google Gmail. | | | | | ✓ |

Setting Up an IMAP or a POP Email Account

If you want to send and receive email messages through an ISP (Internet Service Provider) account, or if you wish to use your device to access your corporate email through a VPN (Virtual Private Network), you will first need to set up an IMAP (Internet Message Access Protocol) or a POP3 (Post Office Protocol) account.

Note: If you have multiple email accounts, you must configure each account with its own settings.

What You Will Need to Set Up Your IMAP or POP3 Account

The following information is needed to configure an email account:

- Account type (IMAP or POP3)
- Incoming and Outgoing Mail Server Names
- Username and Password
- Domain Name
- Special Security Settings (if used)

For more information about configuring email accounts, go to <http://www.microsoft.com/windowsmobile/help/smartphone/default.aspx>.

To set up a POP or IMAP account:

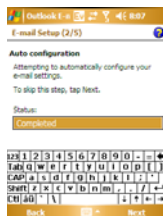
1. From the **Today** screen, tap **Start > Messaging**.



2. Tap **Menu > Tools > New Account**.



- Enter your email address, and then tap **Next**. (Auto configuration attempts to download necessary email server settings so that you do not need to enter them manually.)

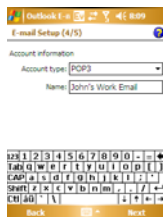


- Once Auto configuration has finished, tap **Next**.
- Enter your name (the name displayed when you send email), user name, and password, and then tap **Next**. (Tap the **Save Password** check box if you want to save your password so that you do not need to enter it again. If Auto configuration was successful, the **Your name** box and **User name** box will be filled automatically.)



IMAP and POP

6. Select your account type and enter the name of the account. Tap **Next** to continue.



7. Enter the **Incoming mail server**, **Outgoing mail server**, and the **Domain** name, and tap **Finish**.



To access additional settings, tap **Options**. For example, you can

- Set your device to automatically check for new mail at a specified interval.
- Limit the number of messages that are downloaded and specify the authentication method for outgoing messages.
- Download attachments or parts of messages.

If Auto configuration was unsuccessful, or if you need to access an account using a VPN server connection, contact your ISP or network administrator for the following information and enter it manually:

| Setting | Description |
|-------------------------------|---|
| User name | Enter the user name assigned to you by your ISP or network administrator. This is often the first part of your email address, which appears before the “at” sign (@). |
| Password | Choose a strong password. You have the option to save your password so you do not need to enter it each time you connect to your email server. |
| Domain | This not required for an account with an ISP, but it may be required for a work account. |
| Account type | Select POP3 or IMAP. |
| Account name | Enter a unique name for the account, such as “Work” or “Home.” This name cannot be changed later. |
| Incoming mail server | Enter the name of your incoming email server (POP3 or IMAP). |
| Outgoing mail server | Enter the name of your outgoing email server (SMTP). |
| Require SSL connection | Select this to ensure that you always send email from this account using an SSL (Secure Sockets Layer) connection. This enables you to send personal information more securely. Note that if you select this and your ISP does not support an SSL connection, you will not be able to send email. |

IMAP and POP

| Setting | Description |
|--|---|
| Outgoing mail requires authentication | Select this if your outgoing email server (SMTP) requires authentication. Your user name and password that you entered previously will be used. |
| Use separate settings | Select this if your outgoing email server requires a different user name and password than those you entered previously. |

Outgoing server settings: (if you selected “Use separate settings” above).

| Setting | Description |
|--------------------------------------|---|
| User name | Enter your user name for the outgoing email server. |
| Password | Enter your password for the outgoing email server. |
| Domain | Enter the domain of the outgoing email server. |
| Require SSL for outgoing mail | Select this to ensure you always send email from this account using an SSL connection. This enables you to send personal information more securely. Note that if you select this and your ISP does not support an SSL connection, you will not be able to send email. |

Tip: You can set up several email accounts in addition to your Outlook email account.

Setting Up Exchange ActiveSync®

Email, Contacts entries, and other information can be synchronized wirelessly on your device using Microsoft Exchange Server and ActiveSync.

Getting Started

- To synchronize wirelessly using Microsoft Exchange Server, you must activate Sprint PCS Vision Data Services. For more information, go to <http://www.sprint.com/vision>.
- Install the Microsoft ActiveSync software from the installation CD included with your device.
- Create an email account as described in “Setting Up an IMAP or a POP Email Account” on page 5.
- Work with your system administrator to collect the following information:
 - Exchange Server address and domain name.
 - Your username and password.

Microsoft Exchange ActiveSync®

Setting Up Your Device

1. From the **Today** screen, tap **ActiveSync**.



Note: If “No Service” is displayed onscreen, wait until your signal is restored before continuing.

2. Tap **Menu > Add Server Source**.
3. Enter the Server Address, and then tap **Next**.

4. Enter your user name, password, and domain name. (The password is case-sensitive, so make sure that the **Caps Lock** is not set, or your password may not be accepted.)



5. Check **Save Password** to avoid having to enter the password whenever you log in to this account, and tap **Next**.

Note: Settings are available for all items that are checked. Tap the **Settings** button to review the settings if needed.

6. Check the boxes for the types of information you wish to synchronize with the Exchange Server, And the tap **Finish**.

When the setup is complete, synchronize to retrieve your email messages. You can also set up a sync schedule to automatically retrieve messages.

Microsoft Exchange ActiveSync®

Setting Up GoodLink™ Wireless Messaging

You can install the optional GoodLink software for secure, real-time access to your Microsoft Outlook email, calendar, contacts, tasks, and notes. GoodLink offers real-time push synchronization of email and personal information; as messages are received on the server, they are automatically downloaded to your device. GoodLink also offers attachment viewing through the **Documents** application on your device and integration with your corporate Global Address List (GAL).

For more information, go to <http://www.good.com>.

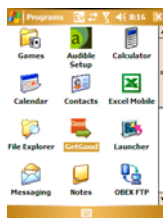
Note: To use the optional GoodLink software, you must activate Sprint PCS Vision Data services.

To set up GoodLink:

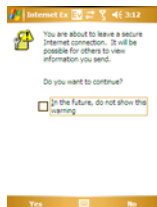
1. From the **Today** screen, tap **Start > Programs**.



2. Tap the **GetGood** icon.



3. Tap **Yes** to acknowledge you are leaving a secure Internet connection.

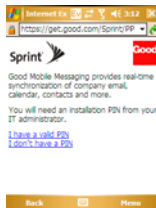


4. Tap "I want GoodLink" to start.



Options with a Valid PIN

1. Tap “I have a valid PIN.”



2. Tap **Yes** to acknowledge you are leaving a secure Internet connection.



3. Tap “**Download Now**” under the **OTA Setup** section and follow the onscreen instructions.

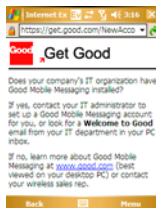


4. Tap “Yes” to being download.



Options with a Valid PIN

1. Tap “I don’t have a valid PIN”



2. Read the onscreen message and either contact your IT administrator or click www.good.com to learn more about Good Mobile Messaging.

Setting Up a Hotmail Account

Note: To send or receive email using Hotmail, you must activate Sprint PCS Vision Data services.

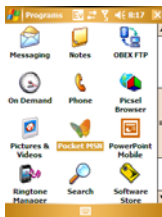
Pocket MSN allows you to quickly set up and access your MSN Hotmail account. You can also manage any folder associated with your account.

To access your Hotmail account:

1. From the **Today** screen, tap **Start > Programs**.



2. Tap **Pocket MSN**.



Hotmail

3. Tap **MSN Hotmail**. Enter your email address and password information. Select the **Save password** check box to avoid having to enter your password each time you check your email messages.



4. Tap **Sign In**.

Using the Web Browser to Access Email

The Web browser allows you to access your Web-based email accounts on your device. Although you can log in from the same Web address that you use on your computer, we recommend that you use the mobile Web address. This address can be found on your email provider's Web site.

To access your Web-based email:

1. From the **Today** screen, tap **Start > Internet Explorer**.



2. Tap the address line at the top of the screen and enter the mobile Web address.

Some common Web addresses are:

- **Hotmail:** <http://mobile.msn.com/hm/folder.aspx>
 - **Yahoo:** <http://mobile.yahoo.com/mail>
 - **Gmail:** <http://m.gmail.com>
3. Once the page is loaded, bookmark the page by tapping **Menu > Add to Favorites**.
 4. Enter your login information and follow the onscreen instructions to access your account.

Web-based Email

