



Get started _

All you need to know to get going with your Sprint 3G/4G Mobile Broadband.

Sprint 3G/4G USB Device 250U



Welcome! _

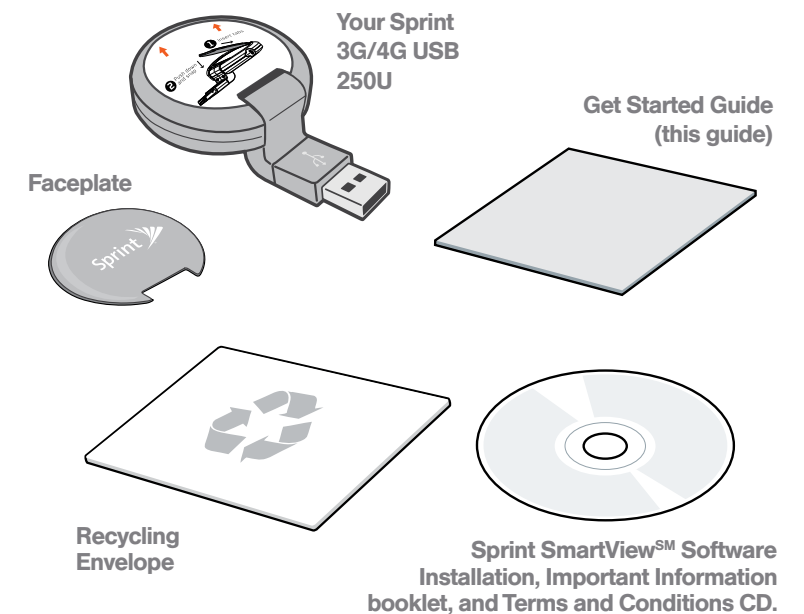


Sprint is committed to developing technologies that give you the ability to get what you want when you want it, faster than ever before. This guide introduces you to the basics of getting started with Sprint and your new Sprint 3G/4G USB 250U.

Get it on the Now Network.™

©2010 Sprint. SPRINT and the logo are trademarks of Sprint. Other marks are property of their respective owners.

What's in the Box _



Before You Start _



▶ Set Up Your Account

Make sure your device is set up with a service plan on your Sprint account. For assistance, call **1-866-639-9565** to speak with a Sprint representative.

▶ Install Sprint SmartView Software

1. Insert the Installation CD into your computer's CD drive.
 - The CD will auto-run.
 - If it does not auto-run, click **Start > My Computer** and double-click **SmartView**.
2. Click **Setup** to begin, and then follow the onscreen instructions to install Sprint SmartView software. (You will be prompted to restart your computer once installation is complete.)

▶ Attach the Faceplate

1. Remove the protective film covering from both faces of the lens (the circular portion of the device).
2. Insert the faceplate tabs into the slots as shown on the film covering.
3. Press down carefully until the faceplate snaps into place.

Manage Your Account _



▶ Online: www.sprint.com

- make a payment, see your bills, enroll in online billing
- check usage and account balance
- see or modify the details of your Sprint service plan
- get detailed instructions and download content

▶ From a Phone

- For any questions about your device or your Sprint service: Dial **1-866-639-9565**
- For general questions about your Sprint account:
 - Sprint Customer Service: Dial **1-888-211-4727**
 - Business Customer Service: Dial **1-800-927-2199**

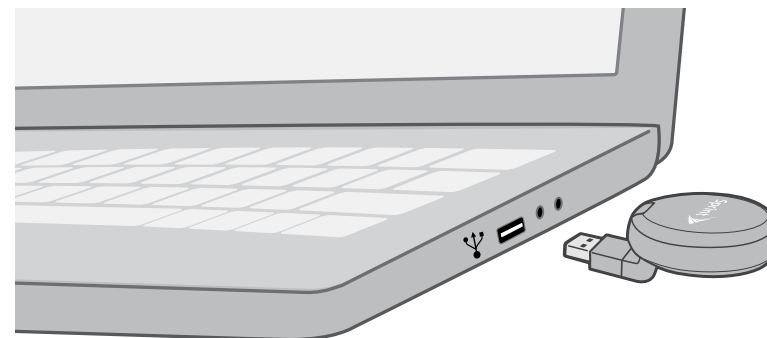
Install Your Device _



▶ Insert the USB Device

IMPORTANT: Insert the CD and install the software before you insert the device into your computer's USB port.

- Insert the device into an available USB port on your computer.
 - Your computer will detect the device and automatically install the drivers.
 - If necessary, rotate your device up to 90 degrees either clockwise or counterclockwise to optimize your connection.



Helpful Sprint Information _



▶ Total Equipment Protection


The protection you need so you can be worry free

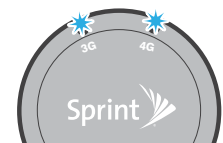
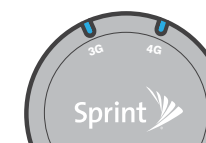
Should anything happen to your device, you'll have a worry-free way to ensure that you get connected again soon.

- **Coverage includes:** Loss, theft, routine maintenance, physical or liquid damage, mechanical or electrical problems, or failure from normal wear and tear.
- **For more information:** See the Total Equipment Protection brochure available at any participating retail location or go to sprint.com/tep for more details. To enroll within 30 days of activation, call **1-800-584-3666**.

Total Equipment Protection is a service provided by Asurion Protection Services, LLC, Continental Casualty Company's (a CNA company) licensed agent for the customers of Sprint.

▶ Activate Your Device

1. With your device inserted, double-click the Sprint SmartView icon () on your computer's desktop.
 - Your device is designed to activate automatically and connect to either the Sprint Mobile Broadband network (3G) or the Sprint 4G network.
 - If both WiMAX (4G) and Mobile (3G) networks are available, you can use the Sprint SmartView window to select which network to use.
2. Launch your Web browser and go to any website to confirm your Internet connection.
 - The left indicator light shows your CDMA (3G) status (**solid blue** means you're connected or within range). The right indicator light shows your WiMAX (4G) status (**solid blue** means you're connected or within range). A **blinking blue** light in either location means the device is searching for a valid network.



Resources _



▶ For Your USB Device

- This *Get Started* guide to get you up and running.
- **User Guide** – View the comprehensive *User Guide* for the Sprint SmartViewSM software online at sprint.com/support.
- **Software** – Download the latest version of the Sprint SmartView software at sprint.com/downloads.
- **Web** – Go to sprint.com/support to access troubleshooting and other resources.